

ECOLINE // SIMPLY MORE SUCCESS

DMC V *ecoline*

DMC 635 V *ecoline*

DMC 1035 V *ecoline*



DMC 635 V *ecoline*

DMG MORI

DMC 635 V *ecoline* control panel display showing 3D model and tool data.

Control panel buttons including top view, 3D view, further views, details, program control, and Execute.

Control panel keyboard and function buttons.

Machine highlights

Machine and technology

Control technology

Options / Quality and service

Technical data



DMC V *ecoline* series

New technology with a dynamic 12,000 rpm motor spindle.

A modern machining centre must be productive, flexible and easy to operate. The modern DMC V *ecoline* model leaves nothing to be desired. Its practice-oriented *SLIMline*[®] user interface, which is optionally available with Operate 4.5 on SIEMENS 840D solutionline or HEIDENHAIN TNC 620, makes it easy for both new customers and experienced professionals to get maximum performance. The offer is completed with the MAPPS IV control with MITSUBISHI. It is all about the fastest path from the drawing to the finished work piece. This is realised via a selection of DMG MORI spindle designs and modern motion control technology, with rapid traverses of 30 m/min. The machine design ensures a clear overview during operations and is also an aesthetic highlight in your shop floor.

02

Highlights

- + Powerful spindle [8,000 rpm / 83 Nm (40 % DC) / 13 kW (40 % DC)], [12,000 rpm / 83 Nm (40 % DC) / 13 kW (40 % DC)]*
- + Tool magazine with 20 tool stations – (30 stations)* with a fast double gripper
- + Reduced idle time: 30 m/min rapid traverse, 1.6 sec. tool change time
- + Highest rigidity and precision as well as a small footprint with the C-frame design
- + 3D control technology: 15" *SLIMline*[®] with Operate 4.5 on SIEMENS 840D solutionline, 15" *SLIMline*[®] with HEIDENHAIN TNC 620 or 10.4" TFT screen with MAPPS IV with MITSUBISHI
- + DMG SMARTkey[®]
- + DMG Netservice

* Option

More clarity!

LED signal lamp

- + Provides information about the process status
- + Increases process reliability and workflow efficiency

More information!

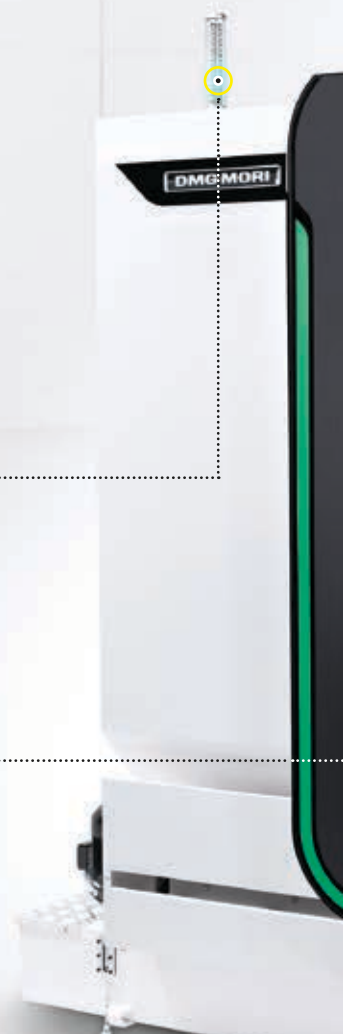
Unique PROGRESSline

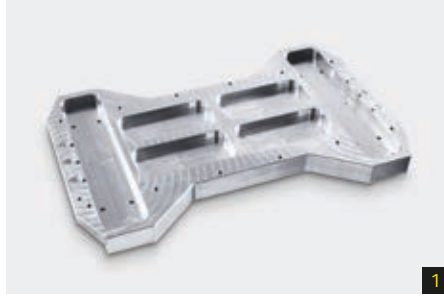
- + Keep an eye on your production
- + A visual and digital render of the remaining cycle time and product counter

More premium!

LIGHTline

- + Branded light element
- + Elegant and modern, with high-quality appearance – an attractive visual cue for your production





1



2



3



4

1: Adapter plate, material: aluminium, dimensions: 325 x 200 x 23 mm

2: Centring flange (machine construction), material: aluminium, dimensions: 210 x 200 x 10 mm

3: Connecting plate (machine construction), material: aluminium, dimensions: 125 x 110 x 32 mm

4: Orientation angle (machine construction), material: steel, dimensions: 98 x 54 x 10 mm



More comfort!

3rd generation SLIMline®

- + The ergonomically designed control panel offers maximum operating comfort. Scratch-resistant, high-tech surfaces also highly resistant to wear out.

More perspective!

45 % larger safety window

- + For optimal view into the work area
- + Perfect illumination with the latest PLANONlight gadget and featuring energy-saving LED technology

New design!

High-tech surface

- + Scratch-resistant and easy to clean surfaces for everyday production use

1 C-frame design made of gray cast iron

- + With an X-axis in the table
- + Maximum rigidity and minimal footprint
- + Good chip flow

2 Stability and precision

- + Re-circulating roller guides in all axes, 3-point machine support

3 Powerful motor spindle

- + For the best cutting performance

4 Tool magazine with 20 / 30* pockets

- + Double gripper for fast tool changing

5 Modern control technology

- + With 3D simulation and graphical support

6 Dynamic axis drives

- + For feeds of 30 m/min



DMC 1035 V ecoline

DMC V ecoline series

Rigid C-frame and ECOLINE modular concept.

The DMC V ecoline series is based on a C-frame gray cast iron bed for maximum rigidity and vibrational absorption. To meet the most demanding production requirements, high-quality ball screws and linear roller guides were combined. Multiple modular options are also available, like a direct measuring system, 12,000 rpm motor spindle or a production package with a 12-bar internal coolant supply system (20-bar with a paper band filter and 600l tank is optional) and a tool magazine with 30 pockets. Low connection load, economical power consumption and energy recovery ensure an optimal energy balance.

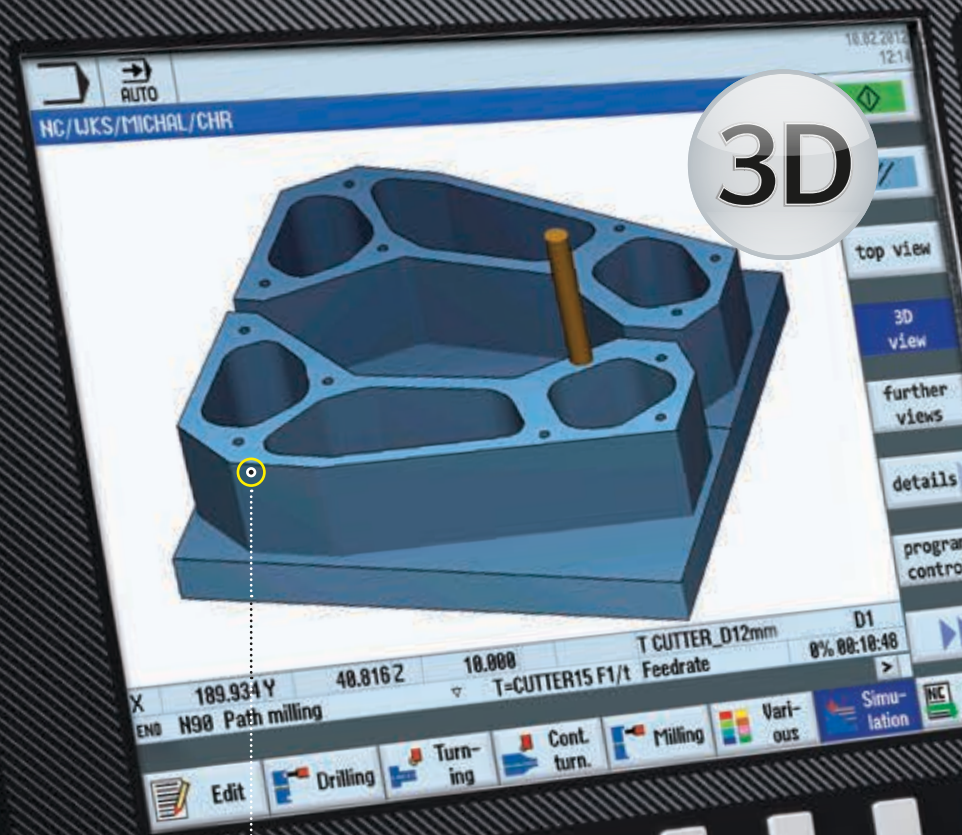


		DMC 635 V <i>ecoline</i>	DMC 1035 V <i>ecoline</i>
Travel (X / Y / Z)	mm	635 / 510 / 460	1,035 / 560 / 510
Spindle speed, max.	rpm	8,000 / 12,000*	8,000 / 12,000*
Torque, max. (40 / 100 % DC)	Nm	83 / 57	83 / 57
Spindle power (40 / 100 % DC)	kW	13 / 9	13 / 9
Number of tool pockets		20 / 30*	20 / 30*
Rapid traverse	m/min	30 / 30 / 30	30 / 30 / 30
Table load	kg	600	1,000

* Option



DMC 635 V *ecoline*



More power!

Fast USB data interface for NC data communication and back-up.

More overview!

15" TFT screen with 3D work piece simulation for simple monitoring on the screen.

More comfort!

Full ASCII keyboard for easy programming.

More storage!

Programme expansion* to 2 GB with a CF memory card in standard.

* only for Operate 4.5 and SIEMENS 840D solutionline

More options!

All cycles in standard.

MAPPS IV with MITSUBISHI

- + MAPPS IV user interface with control console and Windows Frontend PC
- + 3D simulation and graphic support
- + Automatic programming function with editing menus
- + CNC operation through use of the external and user memory area
- + Input and output of programmes via MORI SEIKI Server from an external PC
- + File display and notes function for access to manuals, drawings and texts
- + Vertical softkeys can be programmed as customised buttons or shortcut keys for quick display of user-selected data

3D



SLIMline® with Operate 4.5

SIEMENS 840D solutionline with ShopMill (in standard) and DMG SMARTkey®

- + 15" TFT screen with a convenient display layout
- + Latest software, intuitive user guide from the drawing to the finished work piece
- + 3D work piece simulation
- + Workshop-oriented programming
- + Multiple cycles, including rigid tapping, pocket milling and falling contours, in standard
- + Programme memory consists of 5 MB of NC memory and an additional 2 GB on a CF card
- + 1.5 times faster block processing time

DMC V *ecoline* series

Control features

	SLIMline® with Operate 4.5 on SIEMENS 840D solutionline	SLIMline® with HEIDENHAIN TNC 620	MAPPS IV with MITSUBISHI
Monitor	15" colour	15" colour	10.4" colour
Access security	DMG SMARTkey®	DMG SMARTkey®	Password
Programming	DIN, ShopMill	DIN, Plain text programming	DIN, CAPS
Simulation	3D work piece simulation	3D work piece simulation	3D work piece simulation
Programme memory	5 MB + 2 GB	250 MB	50 MB + 6 GB
Block processing time	1.5 ms	1.5 ms	2 ms
Interface	USB, Ethernet	USB, Ethernet	USB, Ethernet
Programming help	Online programming handbook	Online programming handbook	Online programming handbook
External programming	SINUTRAIN	TNC 620 (programming station)	MORI-AP
	Operate 4.5 and SIEMENS 840D solutionline	HEIDENHAIN TNC 620	MAPPS IV
DMC 635 V <i>ecoline</i>	•	•	
DMC 1035 V <i>ecoline</i>	•	•	◦

• Standard, ◦ Option

3D



SLIMline®

HEIDENHAIN TNC 620 with plain text dialogue and DMG SMARTkey®

- + 15" TFT screen with a convenient display layout
- + Comfortable programming with the new full ASCII keyboard
- + 1.5 ms block processing time in standard
- + Programme Memory with 250 MB on a CF card
- + Workshop-oriented programming with graphical support
- + Fast data interface for externally created programmes
- + Cycles for measuring work pieces and tools in conjunction with the HEIDENHAIN touch probe system

DMC V *ecoline* series

SLIMline® – the controls with a modern user interface.

Regardless of your control preferences, ECOLINE offers you the most advanced controls for your industry. SLIMline®, optionally with Operate 4.5 on SIEMENS 840D solutionline or with HEIDENHAIN TNC 620 supports both NC text and fast interactive cycle programming. The keyboards are ergonomically laid out and the screen is divided into user-friendly menus for easy handling. The large, high-resolution 15" TFT screen enables you to run 3D simulations of a machining process, fast and in real-time – that way, you save valuable time and stay on the safe side! The SLIMline® comes with an attractive scratch-resistant anodised aluminium surface finish. The control choice is extended by MAPPS IV with MITSUBISHI. This is what a modern and accountable work place looks like!

More security!

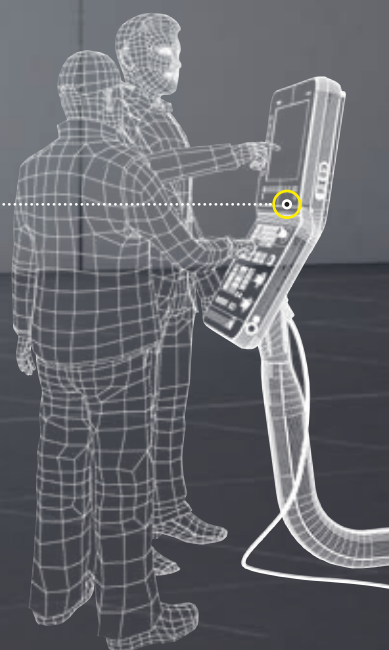
DMG SMARTkey® with transponder. Personal authorisation offers custom access privileges for each user.

More comfort!

Ergonomic for body heights from 1.60 m to 1.95 m with the adjustable SLIMline® panel.

More service!

DMG MORI Messenger gives you real-time access to detailed machine status information – anytime and anywhere. With **DMG Service Agent ECOLINE** you will receive timely notification of required maintenance and implementation support.





1,000 times proven motor spindle from DMG MORI

Increasing productivity is that easy.

The DMC V *ecoline* series uses a modern, water-cooled motor spindle for high spindle speeds. The dynamics of spindle speed-up and stopping, for example, for automatic tool changing, reduces idle time. Also, small run-out accuracy improves surface quality during milling and extends the tool life. Motor spindles are included in the production package with the 12- or 20-bar internal coolant supply system while an up to 80-bar rotary-feedthrough ensures that the coolant lubricant flows directly through the motor spindle to the tool.



Motor spindle – Optimal for the machining of aluminium

- 1 Optional water-cooled motor spindle (12,000 rpm / 83 Nm / 13 kW by 40 % DC)
- 2 Water-cooled headstock in standard for optimal heat removal during thermal stress
- 3 Maintenance-friendly with the "Easy Change Principle", which allows the spindle to be completely replaced
- 4 Permanently grease lubricated, precision-mounted spindle design



Options

5 WH 10 automatic work-piece handling

- + Handling system with maximum storage capacity
- + Complete machining with additional accessories that can be integrated
- + 6-axis industrial robot, loading capacity up to 10 or 25 kg, work range up to 1,611 / 2,033 mm
- + 2- or 4-drawer models with max. 300 kg loading capacity for parallel loading and machining

6 4th axis

- + The optional NC dividing head makes efficient machining with four axes possible
- + Centre height: 150 mm
- + Face plates: \varnothing 160–240 mm
- + 3-jaw chuck: \varnothing 160–200 mm
- + Spindle load with / without support: 200 / 400 kg
- + Clamping torque: 800 Nm
- + Spindle speed: 50 rpm
- + Cycle time incl. clamping: approx. 0.8 sec. (90°)

7 Measuring and precision

The DMC V *ecoline* series even impresses with its axes positioning precision, which can be increased to 8 μ m VDI standard with direct measuring scales. Tool and work piece touch probes also simplify machine set-up and ensure process stability.

ECOLINE measuring probe kit

- + PowerProbe 40 *optical* measuring probe for work piece set-up and measuring
- + OTS optical tool setter for tool measuring
- + OMI-2T optical receiver for both buttons

Option packages

Production package 1

- + Motor spindle (12,000 rpm / 83 Nm / 13 kW by 40 % DC)
- + 12-bar internal coolant supply pump
- + Chip flushing working area
- + Chip conveyor with expanded 360l coolant tank
- + Coolant / blast air changeover
- + Spray gun for swarf removal
- + Enclosed machine cabin (folding roof)
- + 4-colour signal lamp

Chip removal package

- + Chip conveyor
- + Spray gun for swarf removal
- + 4-colour signal lamp

Safety package for power failure

- + Overvoltage limiter
- + Low-voltage monitoring

Production package 2

- + Motor spindle (12,000 rpm / 83 Nm / 13 kW by 40 % DC)
- + 20-bar internal coolant supply pump
- + Chip flushing working area
- + Chip conveyor with expanded 600l coolant tank
- + Coolant / blast air changeover
- + Spray gun for swarf removal
- + Enclosed machine cabin (folding roof)
- + 4-colour signal lamp
- + Paper band filter
- + Rotor clear (window)

Tropical package

- + Active cooling system for electrical cabinet*
- + Additional fan in the control panel

* when using the 12,000 rpm motor spindle

Additional options

- + SK 40, CAT 40, BT 40 tool holder
- + Tool magazine with 30 stations
- + Direct measuring system (X / Y / Z)
- + TS649 measuring probe for work piece measuring
- + TT140 measuring probe for tool measuring
- + 4-colour signal lamp
- + Spray gun
- + Coolant / blast air changeover
- + Oil and emulsion mist separator
- + Roto-clear window
- + Electronic hand wheel
- + 10 additional M-functions
- + Chip flushing working area (with optional chip conveyor)
- + Cabin roof
- + Automatic door
- + DMG Powertools (DMG Service Agent ECOLINE, DMG MORI Messenger)

DMC V ecoline series

Top quality for highest demands.

For ECOLINE, the motto “high quality at attractive prices,” applies not only to the machine tools but also to the many available accessories. A wide range of options and services enhances the everyday user experience and increases productivity. The high quality of the ECOLINE machines can only be ensured through optimum production quality standards. This is why the ECOLINE machines are specially built using an assembly line concept that utilises screen-guided assembly and quality steps.



Machine quality

- + Mature, field-proven design
- + Selected components from a certified supply chain of well-known vendors
- + 48-hour endurance test
- + Laser measuring / axis positioning as a standard test
- + CE-standard machines
- + NAS adapter for every machine

Production quality

- + Optimised processes through the assembly line concept with comprehensive standardisation
- + Screen-guided workstation ensure high quality and also support final assembly inspection
- + Efficient supply chain and material flow

- + Best innovation strength through an internal suggestion scheme and bonus programme
- + Quality assurance system with an in-house test area
- + Factories are ISO certified



DMC V *ecoline* series

13

The ECOLINE service – your guarantee for a long machine lifespan!

Whether it is personal contact via the DMG MORI 24/7 Service Hotline, efficient diagnosis through DMG Netservice, fast on-site service by our first-class trained technicians or express delivery of original spare parts – with ECOLINE you benefit from all the expertise of a global machine tool manufacturer.

Highlights

- + Short reaction time thanks to our extensive service network
- + Always nearby with our local DMG MORI sales and service offices
- + 24/7 Hotline: In most cases, our experts can solve your technical problems via phone!
- + Online problem-solving with DMG Netservice
- + Preventive maintenance and inspection by our experts
- + Original spare parts directly from the manufacturer for maximum production reliability

DMC V *ecoline* series

Technical data

		DMC 635 V <i>ecoline</i>	DMC 1035 V <i>ecoline</i>
Work area			
Travel in the X-axis	mm	635	1,035
Travel in the Y-axis	mm	510	560
Travel in the Z-axis	mm	460	510
Work spindle			
Speed range, max.	rpm	8,000 / 12,000*	8,000 / 12,000*
Spindle power (40 / 100 % DC) 8,000 / 12,000*	kW	13 / 9	13 / 9
Torque (40 / 100 % DC) 8,000 / 12,000*	Nm	83 / 57	83 / 57
Rapid traverse in X / Y / Z	m/min	30	30
Feed force, max.	kN	5	5
Feed rate	m/min	24	24
Positioning accuracy			
Resolution in X / Y / Z (in- / direct position measuring system)	mm	0.001	0.001
P _{max} according to VDI / DGQ 3441 (in- / direct position measuring system)	mm	0.020 / 0.008	0.020 / 0.008
P _{max} according to JIS B6330-1980 (in- / direct position measuring system)	mm	0.010 / 0.005	0.010 / 0.005
Tool magazine / changer			
Number of tools		20 / 30*	20 / 30*
Tool weight, max.	kg	6	6
Tool length, max.	mm	300	300
Tool diameter, max.	mm	ø 80	ø 80
Tool diameter with vacant adjacent places, max.	mm	ø 130	ø 130
Chip-to-chip time	sec.	5	5
Table design			
Clamping surface with T-slots	mm	790 × 560	1,200 × 560
Table height (upper edge of table)	mm	720	720
Table load (assembly weight)	kg	600	1,000
Machine weight / Connection values			
Machine weight with 20 tool magazines and a chip tray	kg	3,850	4,500
I _n max. by 100 % DC	A	28	28
Power consumption by 100 % DC	kVA	17	17
Backup fuse, max.	A	35	35
Control			
SLIMline® with Operate 4.5 on SIEMENS 840D solutionline with ShopMill		•	•
SLIMline® with HEIDENHAIN TNC 620 and plain text dialogue		•	•
MAPPS IV with MITSUBISHI			◦

* Option, • Standard, ◦ Option

Cutting data

Face mill

Tool diameter	mm	ø 63
Spindle speed	rpm	1,510
Feed rate	mm/min	1,900
Cutting depth	mm	3
Cutting width	mm	42
Material removal rate	cm ³ /min	239
Material		C45

U-drill

Tool diameter	mm	ø 40
Spindle speed	rpm	1,432
Feed rate	mm/min	270
Material removal rate	cm ³ /min	215
Material		C45

Tap

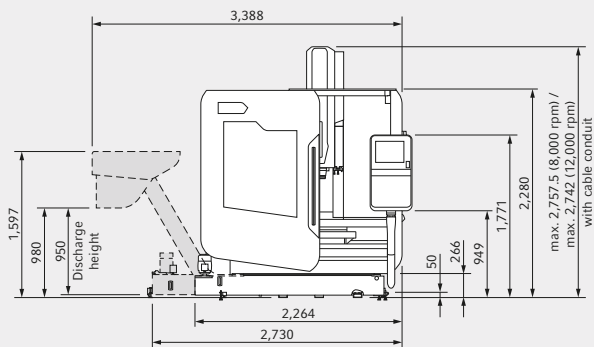
Tool diameter	mm	M20 × 2.5
Spindle speed	rpm	200
Feed rate	mm/min	500
Material		C45

DMC V *ecoline* series

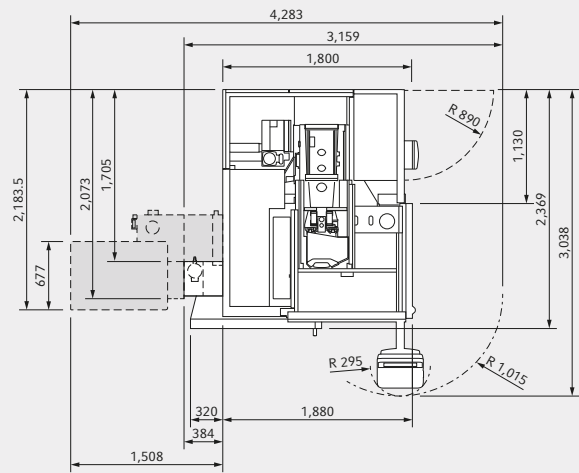
Footprint and work areas

DMC 635 V *ecoline* with chip conveyor

Front view

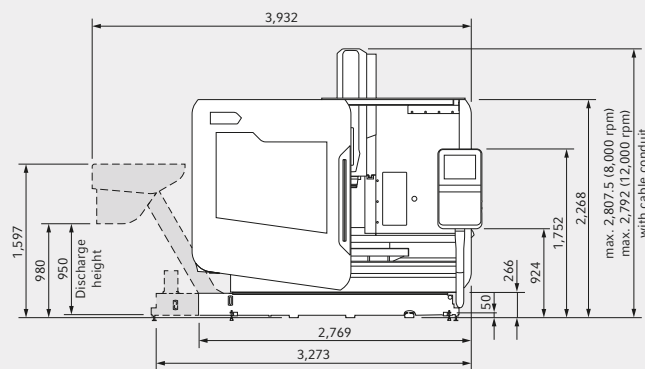


Top view

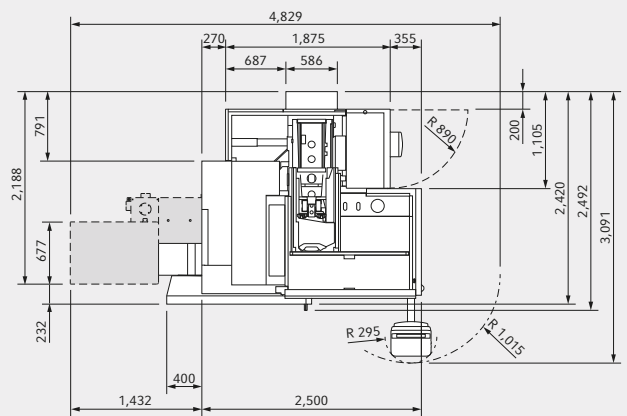


DMC 1035 V *ecoline* with chip conveyor

Front view



Top view

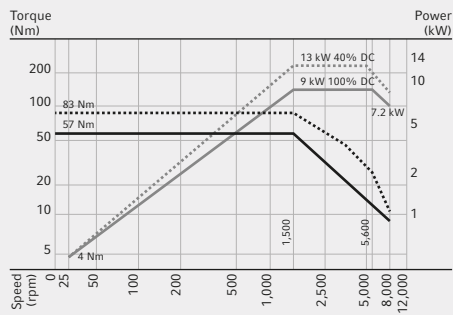


Footprint

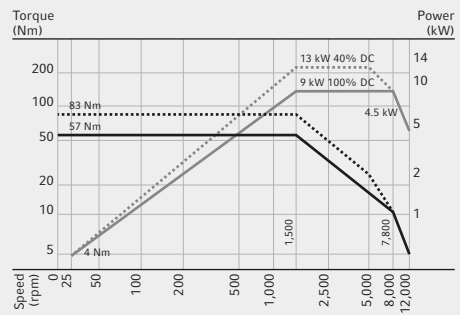
		DMC 635 V <i>ecoline</i>	DMC 1035 V <i>ecoline</i>
With coolant tank	mm	4,400 × 4,500	5,000 × 4,550
With chip conveyor	mm	5,500 × 4,500	6,050 × 4,550
With larger coolant tank	mm	5,800 × 4,500	6,300 × 4,550
With optional active cooling unit	mm	4,400 × 5,050	5,000 × 5,000

Performance diagram

Standard spindle with 8,000 rpm

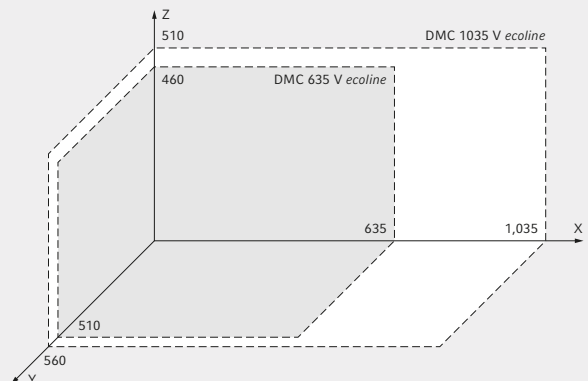


Motor spindle with 12,000 rpm



Work area and dimensions

The DMC V *ecoline* offers maximum travel of 1,035 × 560 × 510 mm and optimal accessibility to the work area for larger work pieces. A variety of spindles and additional options are also available.



Worldwide at your service!

DMG MORI GERMANY**DMG MORI Deutschland**

Riedwiesenstraße 19
D-71229 Leonberg
Tel.: +49 (0) 71 52 / 90 90 - 0
Fax: +49 (0) 71 52 / 90 90 - 22 44

DMG MORI EUROPE**DMG MORI Europe**

Lagerstrasse 14
CH-8600 Dübendorf
Tel.: +41 (0) 44 / 8 01 12 - 41
Fax: +41 (0) 44 / 8 01 12 - 31

DMG MORI Austria

Oberes Ried 11 · A-6833 Klaus
Tel.: +43 (0) 55 23 / 6 91 41 - 0
Fax: +43 (0) 55 23 / 6 91 41 - 100

DMG MORI Benelux

Hermesstraat 4B · B-1930 Zaventem
Tel.: +32 (0) 2 / 7 12 10 - 90
Fax: +32 (0) 2 / 7 12 10 - 99

DMG MORI Czech

Kaštanová 8 · CZ-620 00 Brno
Tel.: +420 545 426 311
Fax: +420 545 426 310

DMG MORI France

Parc du Moulin · 1, Rue du Noyer
B.P. 19326 Roissy-en-France
F-95705 Roissy CDG Cedex
Tel.: +33 (0) 1 / 39 94 68 00
Fax: +33 (0) 1 / 39 94 68 58

DMG MORI Hungary

Vegyész u. 17–25 · B. Building
H-1116 Budapest
Tel.: +36 1 430 16 14
Fax: +36 1 430 16 15

DMG MORI Ibérica

Pol. Ind. Els Pinetons
Avda. Torre Mateu 2–8 · Nave 1
E-08291 Ripollet · Barcelona
Tel.: +34 93 586 30 86
Fax: +34 93 586 30 91

DMG MORI Italia

Via G. Donizetti 138
I-24030 Brembate di Sopra (BG)
Tel.: +39 035 62 28 201
Fax: +39 035 62 28 210

DMG MORI Middle East

Jebel Ali Free Zone · JAFZA Towers 18
Floor 24 · Office 3
PO Box 262 607 · Dubai, U.A.E.
Tel.: +971-4-88 65 740
Fax: +971-4-88 65 741

DMG ECOLINE AG

Lagerstrasse 14, CH-8600 Dübendorf
Tel.: +41 (0) 44 / 8 01 14-40, Fax: +41 (0) 44 / 8 01 14-41

DMG ECOLINE GmbH

Oberes Ried 11, A-6833 Klaus
Tel.: +43 (0) 55 23 / 9 06 01 - 600, Fax: +43 (0) 55 23 / 9 06 01 - 650
info@dmgmori.com, www.dmgmori.com

DMG MORI Polska

ul. Fabryczna 7
PL-63-300 Pleszew
Tel.: +48 (0) 62 / 7428 000
Fax: +48 (0) 62 / 7428 114

DMG MORI Romania

Road Bucuresti
Pitești, DN7, km 110
Platforma IATSA
RO-117715 Pitești · Stefanesti
Tel.: +40 2486 10 408
Fax: +40 2486 10 409

DMG MORI Russia

Nowoholowskaja-Strasse 23/1
RUS-109052 Moscow
Tel.: +7 495 225 49 60
Fax: +7 495 225 49 61

DMG MORI Scandinavia**_ Danmark**

Robert Jacobsens Vej 60 · 2.tv
DK-2300 København S
Tel.: +45 70 21 11 11
Fax: +45 49 17 77 00

_ Sverige

EA Rosengrens gata 5
S-421 31 Västra Frölunda
Tel.: +46 31 348 98 00
Fax: +46 31 47 63 51

DMG MORI Schweiz

Lagerstrasse 14
CH-8600 Dübendorf
Tel.: +41 (0) 44 / 8 24 48 - 48
Fax: +41 (0) 44 / 8 24 48 - 24

DMG MORI South East Europe

9th km. National Road Thessaloniki –
Moudanion · PO Box: 60233
GR-57001 Thessaloniki
Tel.: +30 2310 47 44 86
Fax: +30 2310 47 44 87

DMG MORI UK

4030 Siskin Parkway East
Middlemarch Business Park
Coventry CV3 4PE · GB
Tel.: +44 (0) 2476 516 120
Fax: +44 (0) 2476 516 136

DMG MORI Turkey

Ferhatpaşa Mah. Gazipaşa Cad. No: 11
TR-34885 Ataşehir, İstanbul
Tel.: +90-216-471 66 36
Fax: +90-216-471 80 30

DMG MORI Africa**Representative**

WIN-TECH Machinery & Tooling
90 El Thawra Street,
El Golf Area Heliopolise
11341 Cairo, Egypt
Tel.: +202 2 690 36 08
Fax: +202 2 690 36 09

DMG MORI ASIA**DMG MORI Australia**

Unit 6, 6 Garden Road
3168 Clayton · VIC
Tel.: +61 3 8545 0900
Fax: +61 3 9561 4999

DMG MORI China

331 Guangzhong Road
201108 Shanghai
Tel.: +86 21 6764 8876
Fax: +86 21 6764 9033

DMG MORI India

No. 3/1, 3rd Main Road
KIADB Peenya 1st Stage, Ward 1, HMT
560 058 Bangalore
Tel.: +91 80 40 89 65 00
Fax: +91 80 41 13 12 85

DMG MORI Indonesia

Komplek Gading Bukit Indah Blok M/01
Jl. Bukit Gading Raya, Kelapa Gading
14240 Jakarta Utara
Tel.: +62 21 453 1199
Fax: +62 21 458 57 414

DMG MORI Japan

2-35-16 Meieki, Nakamura-ku
Nagoya City, Aichi
450-0002, Japan
Tel.: +81-52-587-1862
Fax: +81-52-587-1864

DMG MORI Korea

#110, 1F. Kofomo Techno Center II
3 Na 505-3 Ho Shihwa Industrial Complex
1289-5 Jeongwang-dong, Siheung-si
Gyeonggi-do 429-932
Tel.: +82 31 488 0500
Fax: +82 31 488 0567

DMG MORI Malaysia

No. 19, Jalan Pendidik U1/31, Seksyen U1
Hicom-Glenmarie Industrial Park
40150 Shah Alam, Selangor
Tel.: +603 5569 5282
Fax: +603 5569 5286

DMG MORI South East Asia

3 Tuas Link 1
638584 Singapore
Tel.: +65 66 60 66 88
Fax: +65 66 60 66 99

DMG MORI Taiwan

No. 12-3, Industrial 33rd Rd.
Industrial Park
407 Taichung City
Tel.: +886 4 2355 6490
Fax: +886 4 2355 6505

DMG MORI Thailand

40 Moo 4 Rojana Industrial Park 2
Rojana Road, Tambol U-Thai
13210 Ampur U-Thai, Ayutthaya
Tel.: +66 35 746720
Fax: +66 35 746731

DMG MORI Vietnam

6th Floor, Mekong Tower
235 Cong Hoa St., Ward 13,
Tan Binh District
Ho Chi Minh City, Vietnam
Tel.: +84 86 28 16 638
Fax: +84 86 28 16 639

DMG MORI Philippines**Representative**

TECHline Machine Tools Inc.
100 North Science Avenue
Laguna Technopark Binan
4024 034 Laguna
Tel.: +63 25 84 43 57 / 58
Fax: +63 25 20 86 72

DMG MORI AMERICA**DMG MORI USA**

2400 Huntington Blvd.
Hoffmann Estates, IL 60192
Tel.: +1 (847) 593-5400
Fax: +1 (847) 593-5433

DMG MORI South America

Rua. Dr. Luiz Migliano, 173
05711-000 São Paulo, SP, Brasil
Tel.: +55 11 3742 - 5000
Fax: +55 11 3773 - 8855

DMG MORI Canada

165 Admiral Blvd.
Mississauga, ON L5T 2T3
Tel.: +1 (905) 795 2891
Fax: +1 (905) 795 0393

DMG MORI Mexico

Acceso III, No. 14, Bodega 11
Parque Industrial Benito Juárez
Querétaro, Qro. 76120
Tel.: +52-442-209-5072
Fax: +52-442-209-5073

Simplified organizational structure.
All worldwide branches available at
www.dmgmori.com